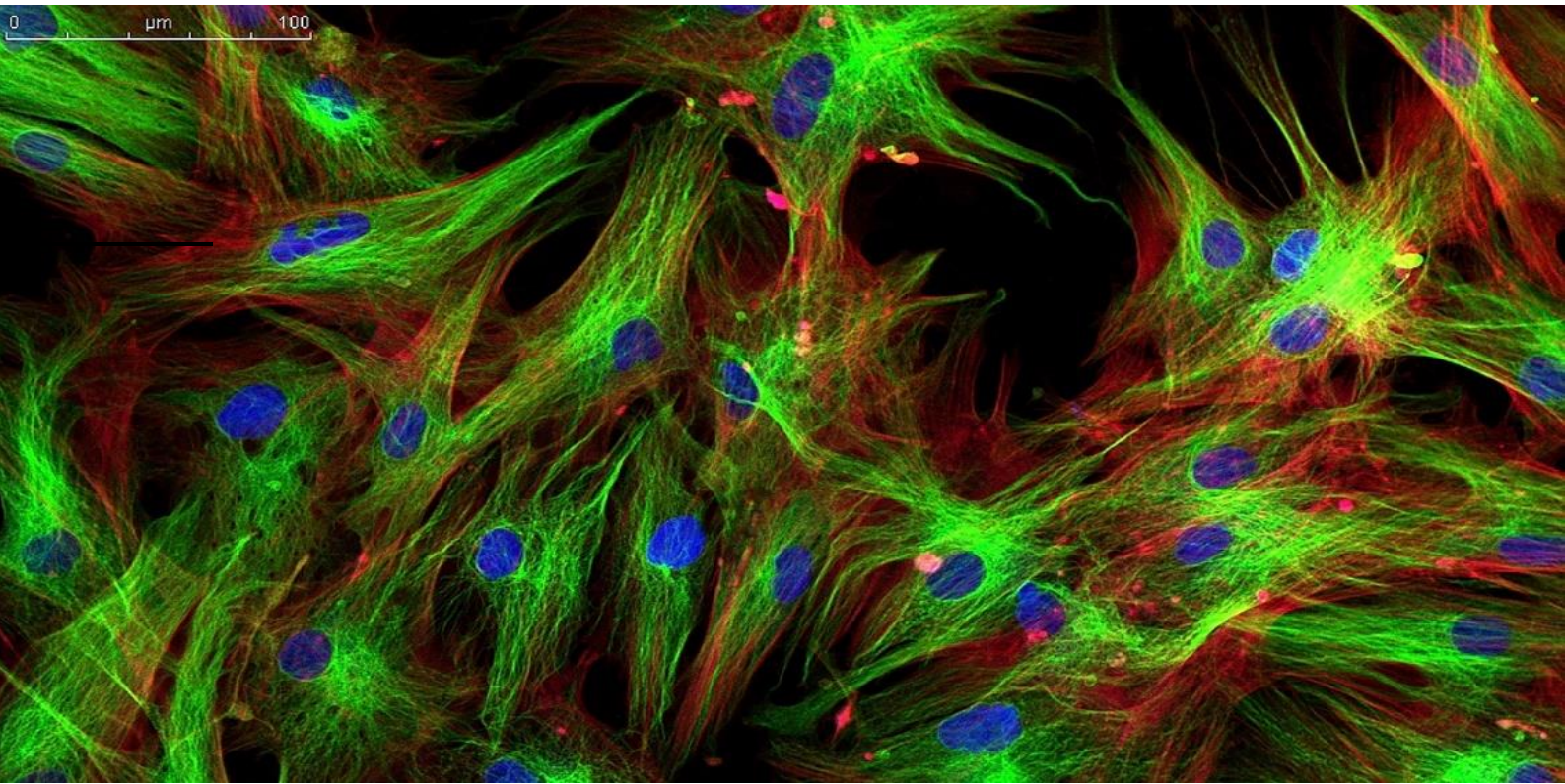


BIOLOGICAL TRINOCULAR **FLOURESCENT MICROSCOPE**





Fluorescent Objective



EPI-fluorescent attachment

Combined FL-800 epi-fluorescent attachment with laboratory microscope CB800, it become a fluorescent microscope. It is suitable for fluorescent microscopy and widely used in venereal disease examination and immune diagnosis.



Technical Specification

Model	SLV-50iFL			
Optical System	Infinite Optical System			
Viewing Head	Compensation Free Trinocular Head Inclined at 30°, Interpupillary 48-75mm			
Objective	Objective Infinite Plan Achromatic Objective: 4X, 10X, 40X & 100X(oil)			
	Infinite Plan Fluorescent Objective : 4X, 10X 40X & 100X(Oil)			
Condenser	Swing Condenser NA 0.9/ 0.25			
Focusing	Coaxial Coarse & Fine Adjustment, Fine Division 0.001mm			
Kohler Illumination	External Illumination, Aspherical Collector, Halogen Lamp 6V/ 30W			
FluorescentSystem	6 Position Disc Reflected Flourescent System			
Reflected Light Source		Excitation	Dichroic Mirror	Barrier Filter
	Blue excitation	BP460~490	DM500	BA520
	Green excitation	BP510~550	DM570	BA590
	Ultraviolet excitation	BP330~385	DM400	BA420
	Violet excitation	BP400~410	DM455	BA455
Lamp	100W HBO Ultra Hi-voltage Spherical Mercury Lamp			
Protection Barrier	Barrier to Resist the Ultraviolet Light			
Power Supplier	Power Supplier NFP-1, Wide range of voltage 100-240V , Digital Display			
Immersion Oil	Fluorescent Free Oil			

Optional Accessories

- **Customise Flourescence Filter: 2Bands or 3Bands, or Customise wave leigth**
- **Camera Attachment**
- **Phase Contrast Attachment**
- **Dark Field Attachment**
- **Netural Filter ND6**
- **Netural Filter ND25**
- **Epi-Fluorescent Centering Slide**
- **Photo Adapter**